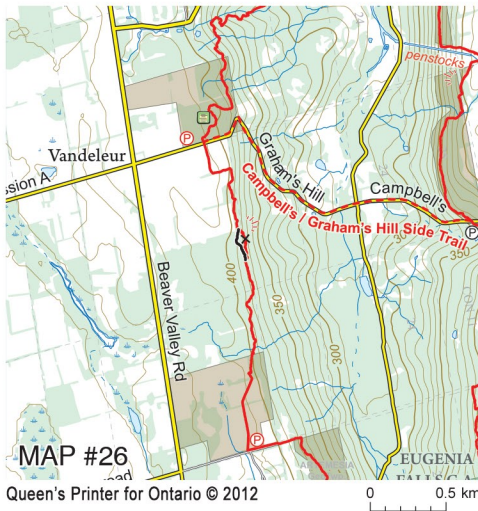




Bruce Trail CONSERVANCY



Beaver Valley Map #26 - reroute south of Graham's Hill

A short portion of the main Trail has been rerouted atop the Escarpment ridge passing through a forested area, and at one point reaching an exposed platform where a view of the Beaver Valley can be enjoyed. Abandoned below is the old trail passing through an area of soggy, jumbled rock fall, difficult to traverse at the best of times.

New main Trail segment = 230 metres
Abandoned main Trail = 285 metres

Nov 2012

We are happy to provide this reroute map to you as a service to encourage you to use the Bruce Trail. This service is provided thanks to the generosity and support of Bruce Trail Conservancy members and donors. In addition to maintaining the Bruce Trail, we continually strive to purchase land along the Niagara Escarpment with the goal of securing the Trail and creating a conservation corridor.

Consider becoming a member today, it's only \$50 per year, or make a donation. Call 1-800-665-4453 or visit www.bruce-trail.org