



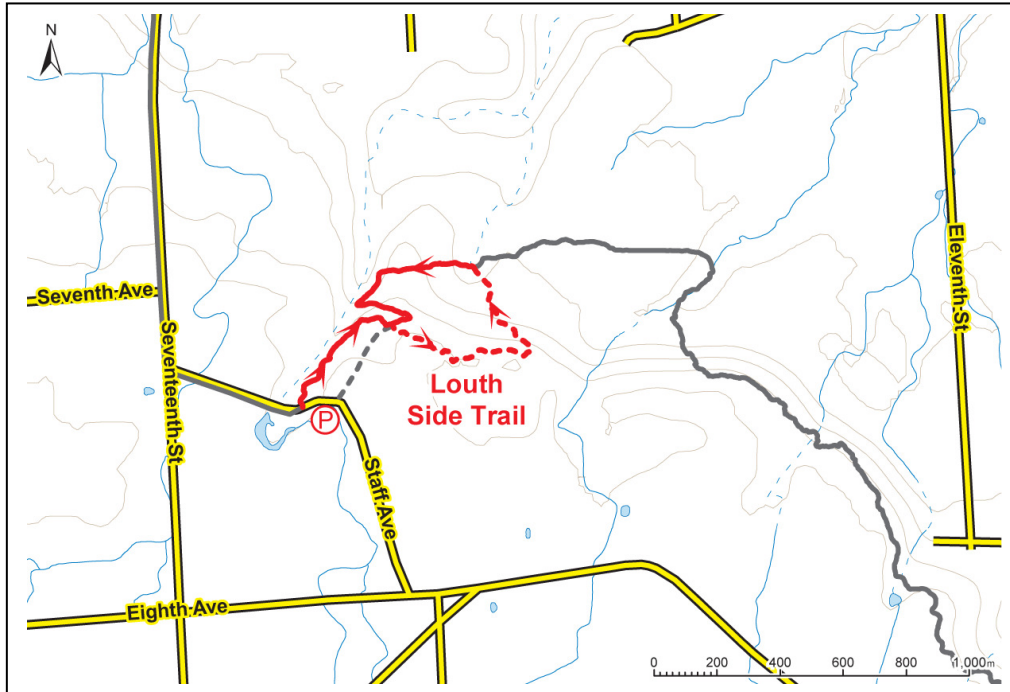
Close to nature.  
Close to home.

THE BRUCE TRAIL  
CONSERVANCY

## Louth Side Trail

**Hike Length:** 1.5 km

**Section:** Niagara Bruce Trail Club



**How to get there and Where To Park:** From the QEW east of Grimsby, take Niagara Road 26 (Jordan Road) south to Road 81 (King Street). Turn left (east) and then right (south) again at Seventeenth Street. Turn left at Staff Avenue and park in the small parking lot just past the bridge.

**Description of the Hike:** From the parking lot, follow the park path northeast to its junction with the main Bruce Trail (white blazes) and the Louth Side Trail (blue blazes). Follow the Louth Side Trail to the right, through an interesting and rocky area of dolostone rock, and then downslope on an old farm access road to the intersection with the white-blazed main Trail.

Turn left and follow the main Trail along the picturesque high ground above Sixteen Mile Creek and past the waterfall. The upper falls plunges almost 4 m while the lower falls plummets from a height of 8 metres. The Bruce Trail then climbs the Escarpment, where it is rejoined by the Louth Side Trail at the junction with the Trail to the parking lot.

Continue following the white blazes of the main Trail along the valley side until you reach Staff Avenue. A short walk to your left along Staff Avenue will take you back to the parking lot and your car.