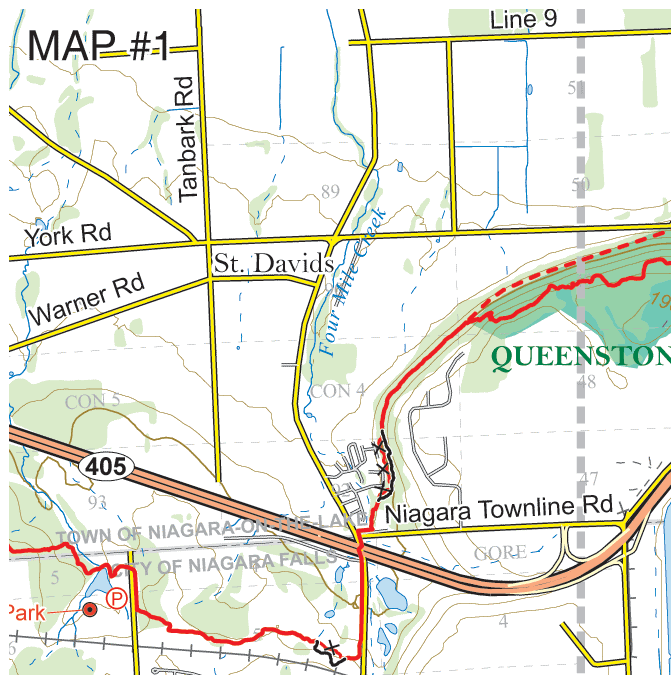
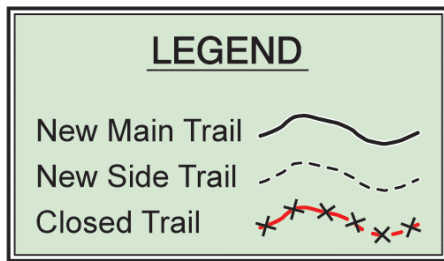


# The Bruce Trail – Trail Reroutes and New Trails as of June 2006

24th Edition (updated Jan 11, 2008)

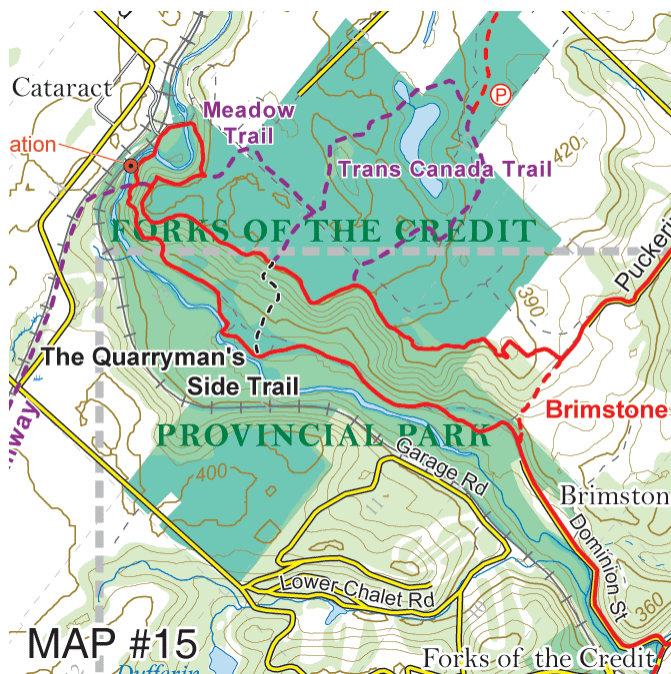


## Niagara, Map #1

### Main Trail reroutes

The reroute north of #405 was requested by the trailer park property because the Trail was very close to a few trailers. As a result the Trail was moved further away from the trailers. In addition, a stile was added to discourage motorcycles from using the Trail.

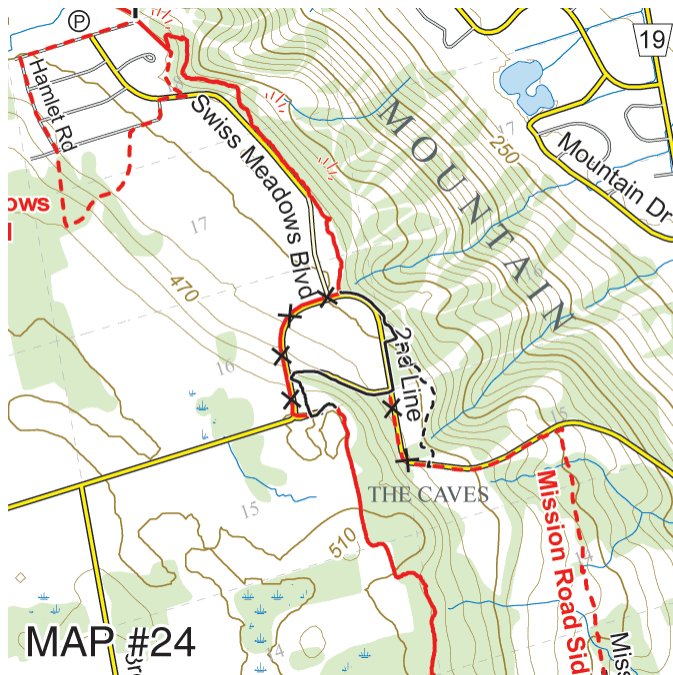
The reroute south of #405 was required as a result of a culvert being washed out and a wide gully created afterwards by motorcycles.



## Caledon, Map #15

### The Quarryman's Side Trail - 480m

In partnership with Parks Ontario, the Caledon Hills Club has opened a new side trail in the Forks of the Credit Provincial Park. The Quarryman's Side Trail links the white-blazed main Trail from the banks of the Credit River to the valley rim and thus creates two shorter loops. To the south, a 3.8 km loop is formed with the Brimstone Side Trail. A 3.1 km loop to the north passes the mill ruins at Cataract which more than a century ago supplied electricity to the surrounding communities.



**Blue Mountains, Map #24**

**Main Trail adjustment**

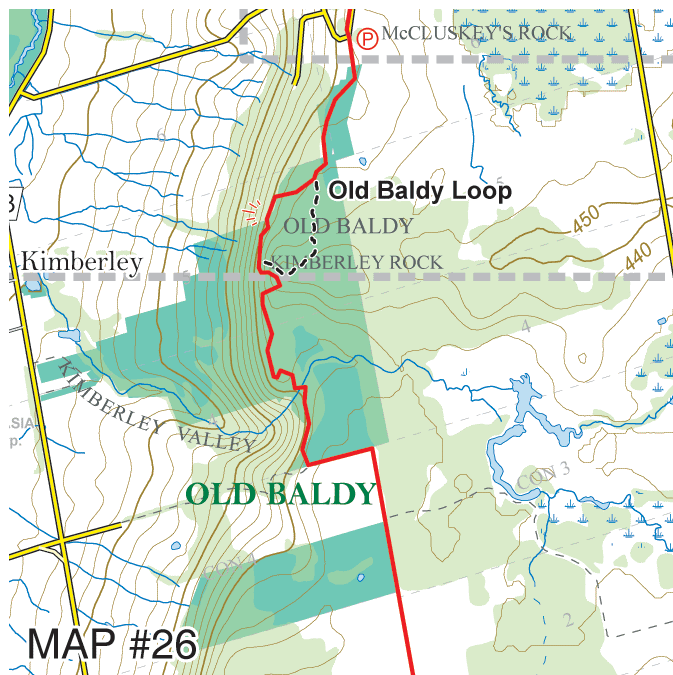
The main Trail has been slightly rerouted. There is no appreciable difference in distance.

**Mission Road Side Trail**

The Side Trail has been adjusted to tap into the Blue Mountains Resort trail system before meeting up with the main Trail. The side trail and main Trail combined form a nice 7 km loop.

Hikers must exercise caution when using the Blue Mountain Resort trails. Stay off trails marked for bikers only and be aware that bikers will be using the multi-use trails also. In winter be aware that skiers will be on sections of the trail especially in proximity to off loading ski lifts.

MBBTC wishes to thank Dr. Tom Webb for allowing us to use his property for the main trail reroute, and to Dan Skelton of Blue Mountain resorts for giving permission to tap into their trail system.



**Beaver Valley, Map #26**

**Old Baldy Loop – 650 metres**

The creation of this loop was a suggestion to help reduce traffic along the badly worn out main Trail and provide an alternative route back to the parking lot. The Old Baldy Loop now provides a pleasant stroll through a hardwood forest after the magnificent view from the cliffs of Old Baldy. It creates a 1.1 km loop.